



  
Visionaire®

Metallic effect pigments  
for decorative  
cosmetic applications



## Metallic effect pigments for decorative cosmetic applications

VISIONAIRE shades are synonyms for superior performance, dramatic metallic reflection and excellent coverage. The interplay of VISIONAIRE with organic or pearlescent pigments opens the doors for uncountable polychromatic effects.

A broad variety of metallic effects can be achieved in color cosmetic applications like eye shadows, blushes, lip sticks, wax pens or body powders.

### **Handling**

VISIONAIRE pigments are generally not aimed for use in water based or water containing systems. The addition of antioxidants is preferred when using VISIONAIRE pigments in formulations containing vegetable oils or unsaturated fatty acids.

The application of VISIONAIRE pigments in cosmetic applications furthermore requires the consideration of regional regulations.

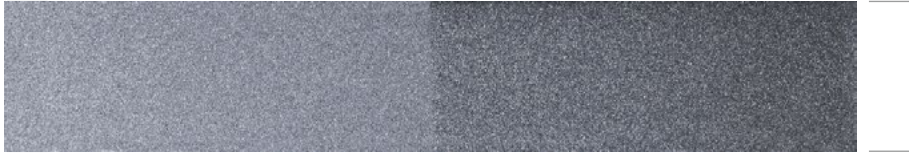
**VISIONAIRE**

Type	Article No.	Particle Size (microns)	Content (%)			
			Aluminum Powder (CI 77000) CAS: 7429-90-5 EINECS: 231-072-3	Bronze Powder (CI 77400) CAS: 7440-50-8 EINECS: 231-159-6	Copper Powder (CI 77400) CAS: 7440-50-8 EINECS: 231-159-6	Silica CAS: 7631-86-9 EINECS: 231-545-4
<b>Silver shades</b>						
Splendid Silver Sea	022686	5 – 50	85 – 95	–	–	5 – 15
Bright Silver Sea	040443	15 – 70	85 – 95	–	–	5 – 15
Sparkling Silver Sea	040966	20 – 95	85 – 95	–	–	5 – 15
<b>Gold and bronze shades</b>						
Natural Gold	060314	5 – 50	–	94 – 97	–	3 – 6
Bright Natural Gold	060242	15 – 70	–	96 – 98	–	2 – 4
Maize Gold	060323	5 – 50	–	94 – 97	–	3 – 6
Bright Sunflower Gold	060243	15 – 70	–	96 – 98	–	2 – 4
Amber	060324	5 – 50	–	94 – 97	–	3 – 6
Honey	060316	5 – 50	–	94 – 97	–	3 – 6
Bright Honey	060244	15 – 70	–	96 – 98	–	2 – 4
<b>Copper shades</b>						
Lava	060325	5 – 50	–	–	94 – 97	3 – 6
Cinnamon	060317	5 – 50	–	–	94 – 97	3 – 6
Bright Cinnamon	060245	15 – 70	–	–	96 – 98	2 – 4
				Aluminum Hydroxide CAS: 21645-51-2 EINECS: 244-492-7	Red 34 (CI 15880) CAS: 6417-83-0 EINECS: 229-142-3	

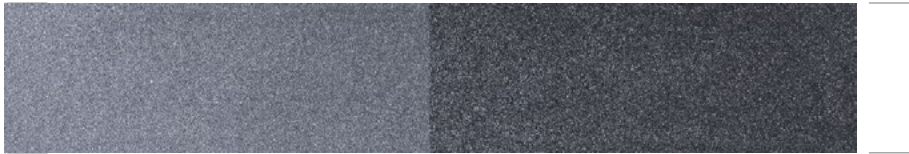
## Silver shades



**Splendid Silver Sea** 5–50  $\mu\text{m}$  Article No. 022686

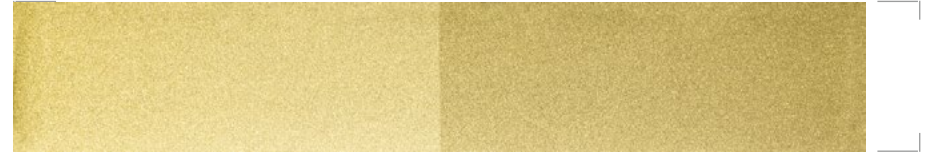


**Bright Silver Sea** 15–70  $\mu\text{m}$  Article No. 040443

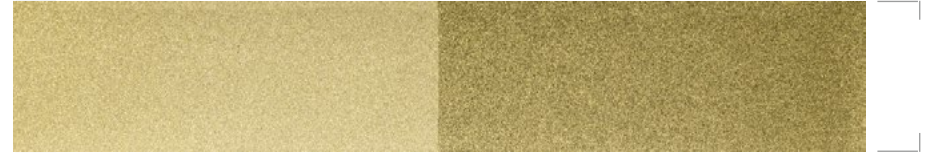


**Sparkling Silver Sea** 20–95  $\mu\text{m}$  Article No. 040966

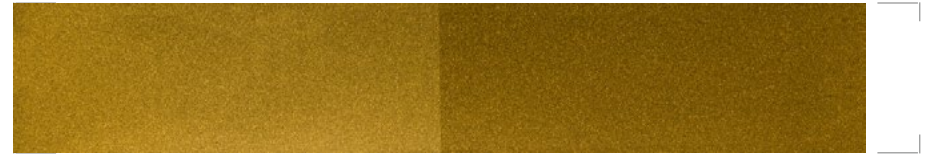
## Gold and bronze shades



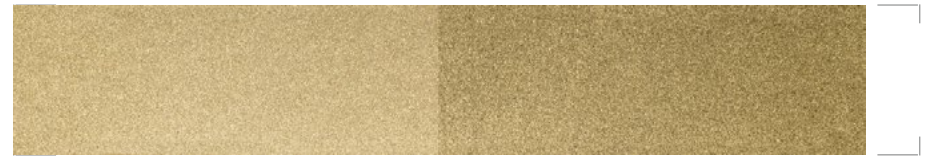
**Natural Gold** 5–50  $\mu\text{m}$  Article No. 060314



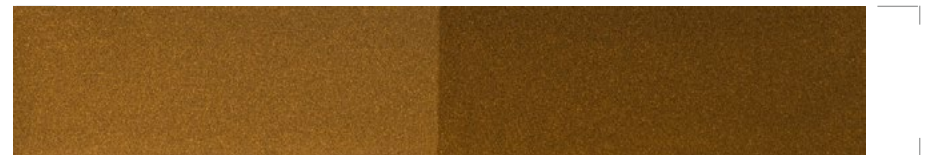
**Bright Natural Gold** 15–70  $\mu\text{m}$  Article No. 060242



**Maize Gold** 5–50  $\mu\text{m}$  Article No. 060323



**Bright Sunflower Gold** 15–70  $\mu\text{m}$  Article No. 060243



**Amber** 5–50  $\mu\text{m}$  Article No. 060324



## Gold and bronze shades



**Honey** 5 – 50  $\mu\text{m}$  Article No. 060316



**Bright Honey** 15 – 70  $\mu\text{m}$  Article No. 060244

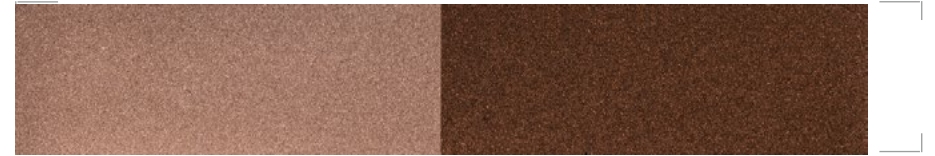
## Copper shades



**Lava** 5 – 50  $\mu\text{m}$  Article No. 060325



**Cinnamon** 5 – 50  $\mu\text{m}$  Article No. 060317



**Bright Cinnamon** 15 – 70  $\mu\text{m}$  Article No. 060245

Visionaire®





ECKART GmbH  
Guentersthal 4  
91235 Hartenstein, Germany  
Tel +49 9152 77-0  
Fax +49 9152 77-7008  
info.eckart@altana.com  
www.eckart.net

ECKART America Corporation  
830 East Erie Street  
Painesville, Ohio 44077, USA  
Tel +1 440 954-7600  
Fax +1 440 354-6224  
Toll-free 800 556 1111  
info.eckart.cosmetics@altana.com  
www.eckart.net

ECKART Asia Ltd.  
Room 701-3, 7th floor C C Wu Building  
302-308 Hennessy Road  
Wan Chai, Hong Kong  
Tel +852 3102 7200  
Fax +852 2882 5366  
info.eckart.asia@altana.com  
www.eckart.net

0/July2024.4 COS PDF  
099123XX0

This information and our technical advice – whether verbal, in writing or by way of trials – are given in good faith but without warranty, and this also applies where proprietary rights of third parties are involved. Our advice does not release you from the obligation to verify the information currently provided – especially that contained in our safety data and technical information sheets – and to test our products as to their suitability for the intended processes and uses. The application, use and processing of our products and the products manufactured by you on the basis of our technical advice are beyond our control and, therefore, entirely your own responsibility.

A member of  **ALTANA**